

Day 3

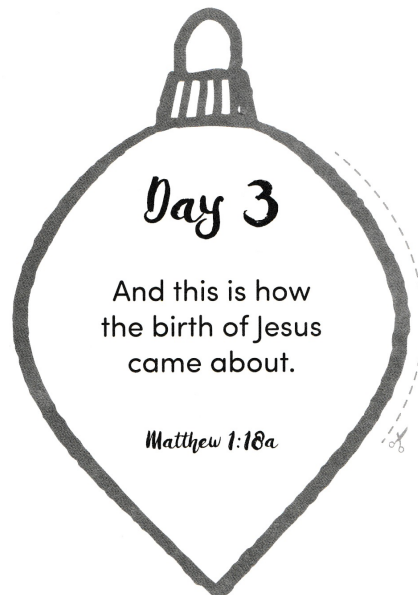
It's hard to imagine how something can be two things at once.



- Color and cut out this baby Jesus.
- Glue the tabs

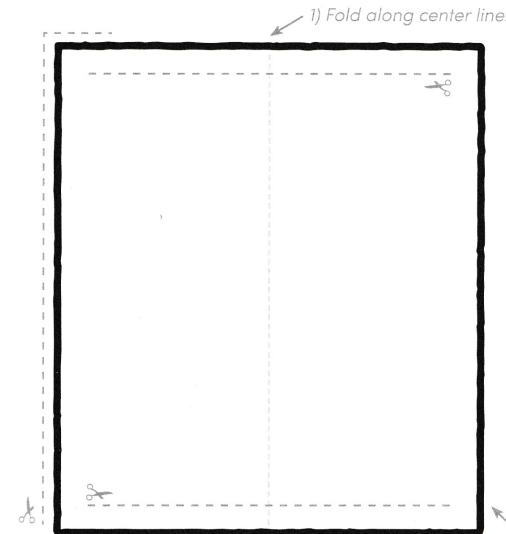
As you choose a place to put this tiny Jesus, remember that even though he was a baby, he was also God.

As we work through the story of Jesus' birth, we'll add more and more people, so keep your figures together and you will build a nativity throughout Advent.



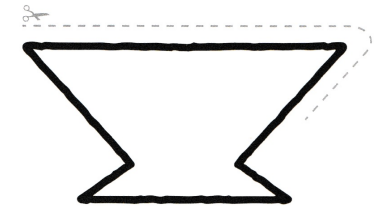
Day 9

Jesus wasn't born in a house. Instead of a cradle, he used the animals' feeding trough.

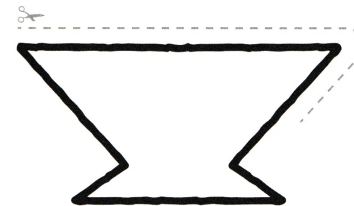


2) Cut slits along cut lines at top and bottom while still folded. Don't go all the way to the edges!

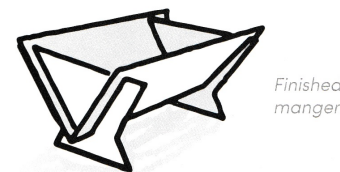
- Color and cut out this manger.
- Follow the directions to assemble.



Cut slit here. Don't go all the way to the edges!



3) Slide each end piece into the slit in the folded rectangle to make the legs.



Finished manger.

When you place baby Jesus in the manger, think about how the God who made the whole world was born as a human far from home and among the animals.

